



Redefining The Wildlife Experiences

# Sudhir Shivaram – Wildlife Photography Experience

4<sup>th</sup> February – 15<sup>th</sup> February, 2027





aranya  
by sita

## Mr. Sudhir Shivaram

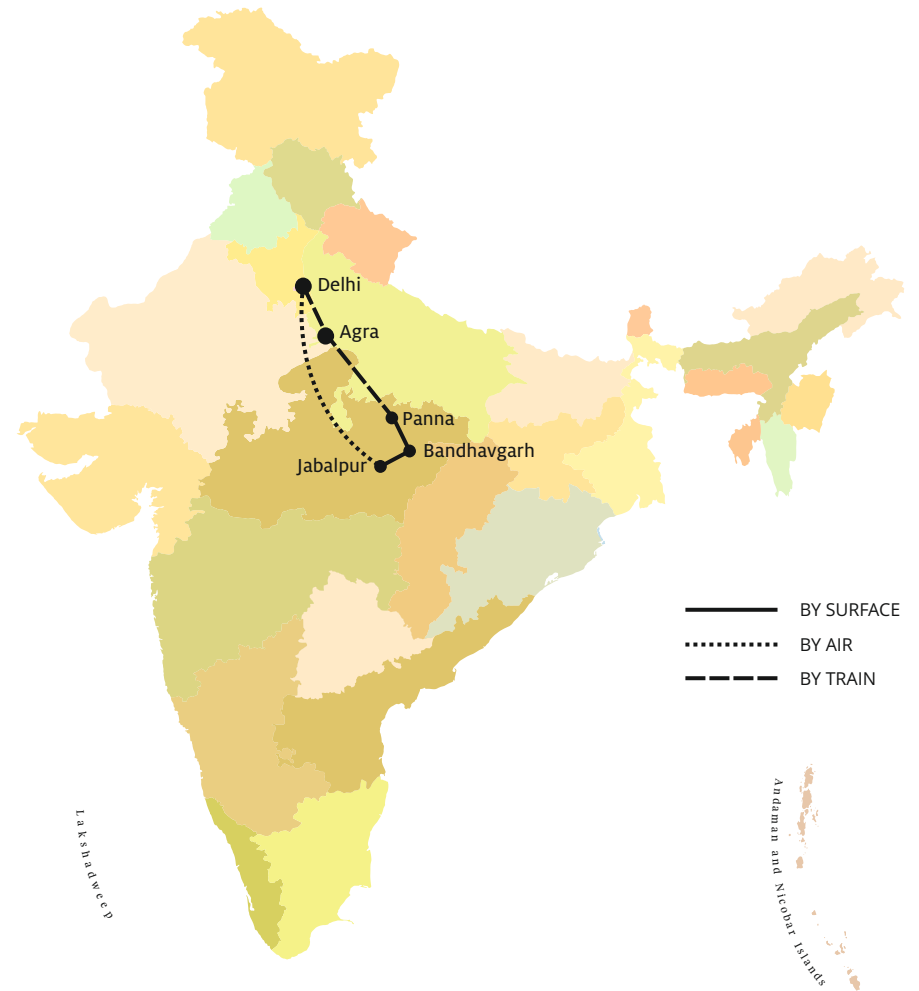
Sudhir Shivaram is one of India's most respected wildlife photographers, celebrated for combining technical excellence with compelling storytelling from the natural world. A former corporate leader who transitioned into photography full-time in 2013, he is today the Brand Ambassador for Sony Alpha India and a globally recognised voice in wildlife imagery. His accolades include the Sanctuary Asia Wildlife Photographer of the Year (2012) and the prestigious National Geographic Yellow Border Award (2013). His work has been widely published, exhibited, and appreciated for its ability to connect people with nature and conservation.

Beyond his work behind the camera, Sudhir is a pioneering photography educator and mentor. Through his extensive online learning platform, mobile app, and field workshops across India and Africa, he has trained and inspired thousands of photographers. He serves as a jury member for the 62nd Wildlife Photographer of the Year (WPY) competition, reflecting his standing in the global photography community. Consistently recognised as a leading voice in the industry, he has featured in Asian Photography Magazine's Top Ten Most Influential People in the Indian Photography Industry, achieving the #1 position in 2018. Through education, innovation, and conservation storytelling, Sudhir continues to shape the future of wildlife photography.



PC - Sudhir Shivaram

## Map



## Tour Highlights

- A photography-focused journey through Central India, mentored by Mr. Sudhir Shivaram, one of India's most celebrated wildlife photographers.
- Visit Agra- Taj Mahal, a UNESCO World Heritage Site and one of the Seven Wonders of the World.
- Explore Panna National Park, known for its dramatic gorges, teak forests, and the serene Ken River—ideal for photographing tigers, leopards, and rich birdlife.
- Continue to Bandhavgarh National Park, one of India's most iconic tiger reserves with high tiger density and breathtaking landscapes.
- Multiple safaris in each park, offering opportunities to capture diverse wildlife and stunning natural backdrops.
- Daily photography sessions with Mr. Sudhir Shivaram, covering techniques, composition, and post-processing.
- Comfortable stays at boutique jungle lodges like Naaharbagh Rajgarh and Bamboo Grove, ensuring a blend of luxury and wilderness.
- Star wildlife includes tigers, leopards, wild dogs, sloth bears, jackals, gaur, and a variety of birds and reptiles.
- Small group size for personalized attention and immersive experiences.
- High-quality camera equipment and accessories of top brands are available on a rental basis.
- A pre-departure online session with Mr. Sudhir Shivaram on what to pack and what to expect.

## Park Highlights

### Panna National Park

- Rugged terrain with dramatic gorges, teak forests, and the Ken River.
- Wildlife: tigers, leopards, sloth bears, and rich birdlife.
- A photographer's paradise with stunning landscapes and immersive wilderness experiences.
- Stay at Naaharbagh Rajgarh Lodge: Cottage-style accommodations offering spacious rooms and serene surroundings, perfect for relaxation after safaris.

### Bandhavgarh National Park

- Renowned for its high density of tigers and scenic sal forests.
- Landscapes include rocky hills, grassy meadows, and historical ruins.
- Wildlife: tigers, leopards, wild dogs, and diverse herbivores and bird species.
- Offers rich biodiversity and iconic big cat sightings.
- Stay at Bamboo Grove: A beautiful jungle lodge with elegant rooms, personalized service, and a tranquil setting close to nature.

# Detailed Itinerary



## Day 1 : Arrive in Delhi

### **Welcome to India!**

Arrive in Delhi and check into The Imperial, a luxurious hotel offering elegant rooms and world-class amenities. Located close to the airport, it's the perfect start to your journey.

**Overnight: The Imperial (Heritage Room/Breakfast)**

## Day 2 : Delhi – Agra

Take a train to Agra.

After arrival, we will proceed to visit Agra Fort, a UNESCO World Heritage Site showcasing the grandeur of Mughal architecture.

Later in the evening, we will experience the Taj Mahal at sunset, capturing its stunning marble glow during the golden hour.

**Overnight: Tajview Agra (Superior Room/Breakfast).**



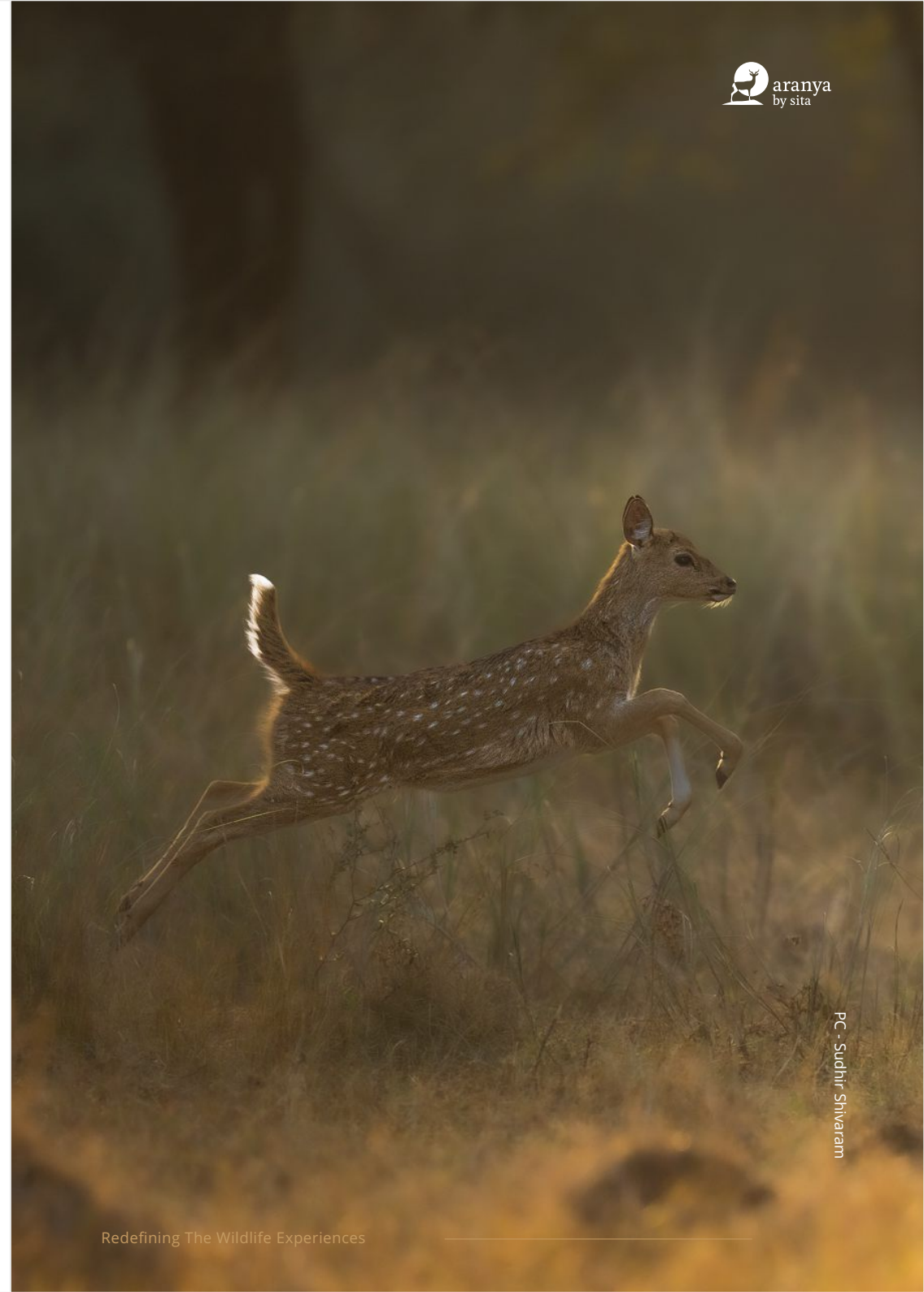
## Day 3 : Agra – Panna

Early in the morning, board the Vande Bharat Express from Agra to Khajuraho, enjoying a comfortable and scenic train journey. Packed breakfast will be provided onboard.

Upon arrival at Khajuraho, drive about 30 minutes to Naaharbagh. Check in at Naaharbagh Rajgarh, a cottage-style lodge offering spacious rooms and serene surroundings.

After settling in, attend an introductory photography session with your photography mentor – Mr. Sudhir Shivaram, covering wildlife camera settings and composition tips. Prepare for the upcoming safaris and relax in the tranquil setting.

**Overnight: Naaharbagh Rajgarh (Jungle Cottage/Lunch & Dinner).**



## Day 4 : Panna

Start the day with a morning safari in Panna, focusing on tigers, leopards, and rich birdlife.

The park's rugged terrain and riverine landscapes make it a photographer's paradise. Panna National Park is a picturesque wildlife reserve in Madhya Pradesh, known for its dramatic gorges, teak forests, and the serene Ken River that flows through its heart. The park is home to tigers, leopards, sloth bears, and a rich variety of birdlife, making it a paradise for nature lovers and photographers. Its rugged terrain and riverine landscapes offer stunning backdrops for wildlife sightings, while the peaceful environment ensures an immersive wilderness experience.

After lunch, head out for an afternoon safari, capturing wildlife in natural light.

Every evening, join engaging sessions by Mr. Sudhir Shivaram, covering photography techniques, composition, post-processing, and everything you need to know about wildlife photography.

**Overnight: Naaharbagh Rajgarh (Jungle Cottage/Lunch & Dinner).**

## Day 5 : Panna

Enjoy another morning safari, exploring new areas for diverse wildlife photography. After lunch, go for an afternoon safari, experimenting with action shots and animal behavior.

**Overnight: Naaharbagh Rajgarh (Jungle Cottage/Lunch & Dinner).**

## Day 6 : Panna

Start early for a morning safari, followed by an afternoon safari to capture the park's landscapes and wildlife during golden hour.

**Overnight: Naaharbagh Rajgarh (Jungle Cottage/Lunch & Dinner).**

## Day 7 : Panna – Bandhavgarh

After morning safari, drive to Bandhavgarh National Park, one of India's most famous tiger reserves with high tiger density and scenic sal forests.

Check in at Bamboo Grove, a beautiful jungle lodge offering elegant rooms and personalized service.

**Overnight: Bamboo Grove (Cottages/Breakfast, Lunch & Dinner).**



## Day 8 : Bandhavgarh

Begin with a morning safari in Bandhavgarh, prime tiger country with rocky hills and open meadows.

Bandhavgarh National Park is one of India's most iconic tiger reserves, renowned for its high density of tigers and breathtaking landscapes. The park features a mix of sal forests, grassy meadows, and rocky hills, creating a perfect habitat for big cats and diverse wildlife. Apart from tigers, Bandhavgarh is home to leopards, wild dogs, and a variety of herbivores and bird species. Its rich biodiversity, combined with historical ruins and scenic terrain, makes it a dream destination for wildlife enthusiasts and photographers alike.

After lunch, head out for an afternoon safari, focusing on big cats and prey species.

**Overnight: Bamboo Grove (Cottages/Breakfast, Lunch & Dinner).**

## Day 9 : Bandhavgarh

Enjoy a morning safari exploring new zones of the park, known for its rich biodiversity and historical ruins. After lunch, go for an afternoon safari, capturing wildlife in varied light conditions.

**Overnight: Bamboo Grove (Cottages/Breakfast, Lunch & Dinner).**

## Day 10 : Bandhavgarh

Start early for a morning safari, followed by an afternoon safari to photograph tigers and other species in their natural habitat. Overnight stay at Bamboo Grove.

**Overnight: Bamboo Grove (Cottages/Breakfast, Lunch & Dinner).**

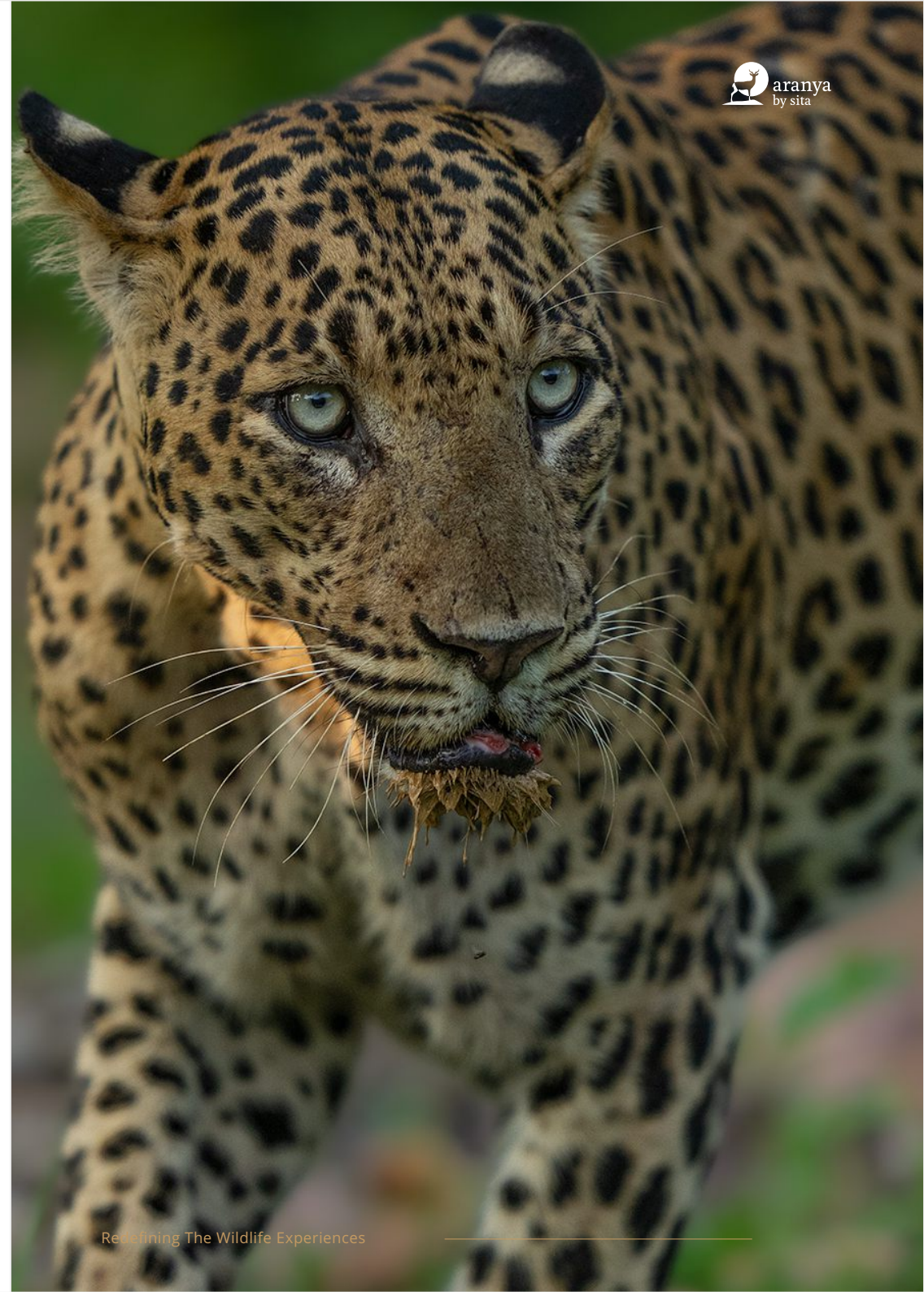
## Day 11 : Bandhavgarh – Jabalpur – Delhi

After breakfast, say goodbye to your photography mentor and drive 4-hours to Jabalpur Airport for your flight back to Delhi. Stay overnight at JW Marriott.

**Overnight: JW Marriott (Deluxe Room/Breakfast).**

## Day 12 : Departure

In-time, transfer to your flight to fly back home.



## The Imperial Delhi

---

A Grand Dame of the East, The Imperial New Delhi is India's iconic heritage luxury hotel, creating legacy moments since 1936. Evoking the opulence of a 19th-century palatial estate, its majestic blend of Victorian, Art Deco, and Lutyens' architecture sets the stage for culturally immersive stay experiences, transformative wellness, and high-touch culinary curation. From marble colonnades and hand-knotted Persian carpets to illustrious accommodations and storied hallways, every corner of this Best Hotel in Delhi-an eight-acre oasis, is infused with history, art and tradition offering soulful sojourns-inviting luxury travellers to unlock timeless moments in the heart of the capital.



---

Hotels

## Tajview, Agra

---

Discover Tajview Agra – IHCL SeleQtions, a premium 5-star intimate hotel that offers unmatched views of the Taj Mahal, built in 1648 by Emperor Shah Jahan in honour of Empress Mumtaz Mahal. Renowned for its blend of heritage charm, modern elegance and personalised hospitality, Tajview is the perfect retreat in the romantic city of Agra.



## Naaharbagh Rajgarh Panna

---

Naaharbagh Rajgarh is a wilderness lodge located near Panna National Park, offering guests a blend of rural Bundelkhand charm and modern comfort in a natural jungle setting. The property features spacious, well-designed rooms and tents positioned on high plinths for safety, each overlooking the surrounding Maniagarh Hills and forest landscape. One can enjoy experiences such as birding trails, and jungle safaris guided by knowledgeable local naturalists.



## Bamboo Grove Bandhavgarh

---

Bamboo Grove Lodge is a boutique luxury retreat set close to the Tala Gate of Bandhavgarh National Park, offering a peaceful stay on the edge of the forest. The lodge features stylish air-conditioned rooms with balconies and calming garden views, designed for comfort after long safari days. Relax by the scenic pool, enjoy traditional Indian cuisine at the in-house restaurant and unwind in beautifully landscaped outdoor spaces. With warm hospitality, modern amenities and easy access to Bandhavgarh's wildlife experiences, Bamboo Grove provides a perfect blend of nature, serenity and understated luxury.





## JW Marriott Delhi

---

Stay in style and sophistication at the award-winning JW Marriott New Delhi Aerocity in New Delhi, India. An unforgettable experience awaits you at our luxury hotel in New Delhi offering luxury accommodations, personalized service, and an ideal location for your stay.





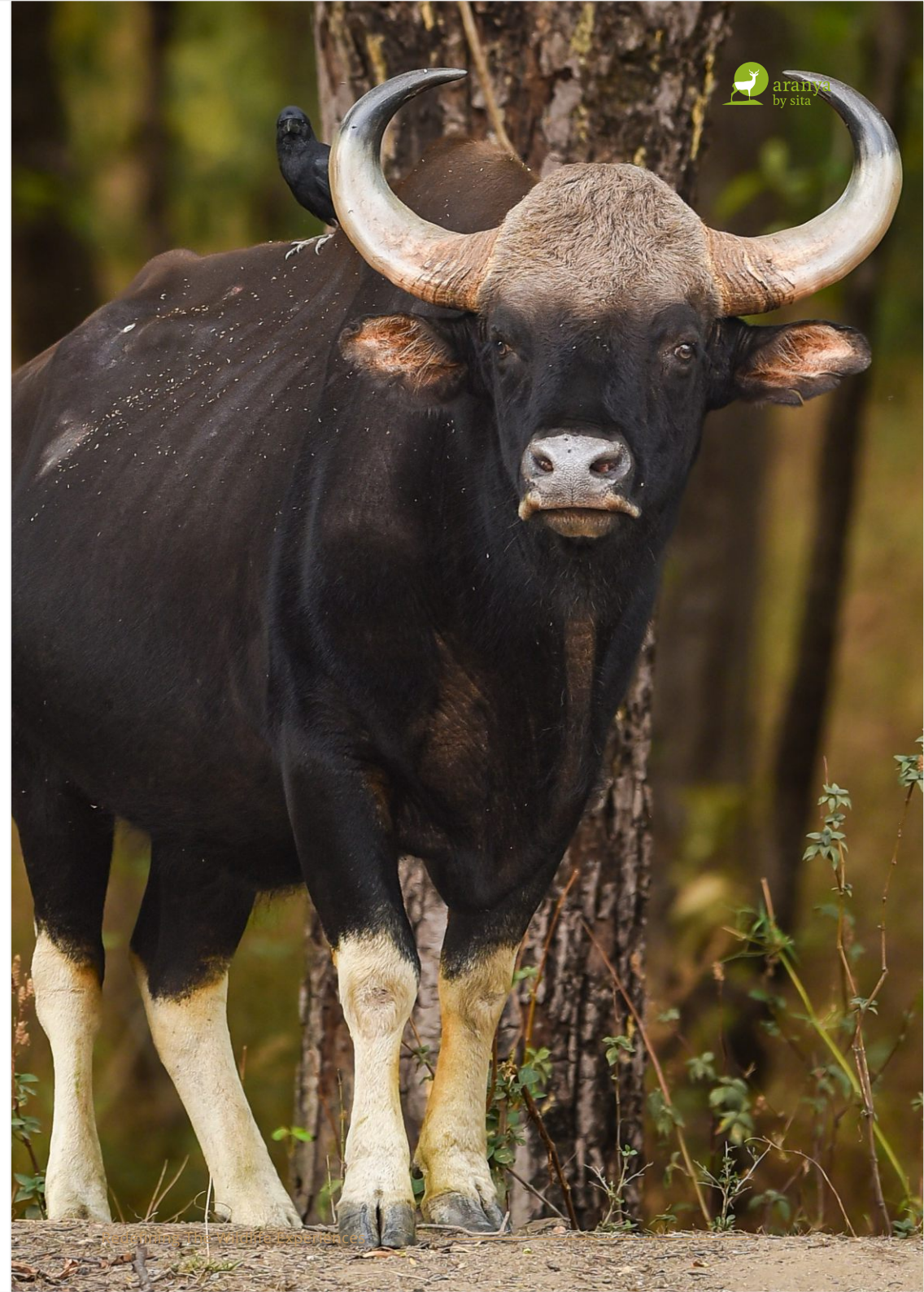
## Star wildlife of the tour

- Tiger
- Leopard
- Wild Dog (Dhole)
- Sloth Bear
- Jackal
- Gaur (Indian Bison)
- Sambar Deer
- Chital (Spotted Deer)
- Nilgai (Blue Bull)
- Wild Boar
- Langur
- Rhesus Macaque
- Indian Paradise Flycatcher
- Malabar Pied Hornbill
- Crested Serpent Eagle
- Grey Junglefowl
- Monitor Lizard... And many more

## Top Tips Before You Travel

- **Travel Documents:** Carry a valid passport or government-issued ID for park entry.
- **Clothing & Gear:** Light, comfortable clothing in neutral colors for safaris. A warm layer for early mornings and evenings. Good walking shoes, hat, and sunglasses are essential.

- **Photography Equipment:** Mobile phones are banned in Central India. Bring your camera, extra batteries, and memory cards. High-quality gear available on rental—book in advance.
- **Health & Safety:** Carry personal medication and a basic first-aid kit. Mosquito repellent and sunscreen recommended. Stay hydrated during safaris and walks.
- **Cash & Payments:** ATMs may be scarce—carry some cash for tips and small purchases. Most lodges accept cards, but connectivity can be patchy.
- **Connectivity:** Mobile networks may be weak; Wi-Fi can be unreliable. Embrace the digital detox and immerse in nature!
- **Weather Check:** February is pleasantly cool, but early mornings and evenings can be very chilly. Daytime highs around 29–30 °C (84–85 °F), with night-time lows near 12 °C (53–54 °F).



---

## 24 Hour Assistance

Neena Malhotra  
M : +91 8588 815 182  
E : [neena.malhotra@sita.in](mailto:neena.malhotra@sita.in)